



## ObG Insider: PROM Diagnosis | BV, Candidiasis, or Trichomoniasis | Prediabetes and Diabetes Type 2

### LATEST FROM OUR WEBSITE

#### OB

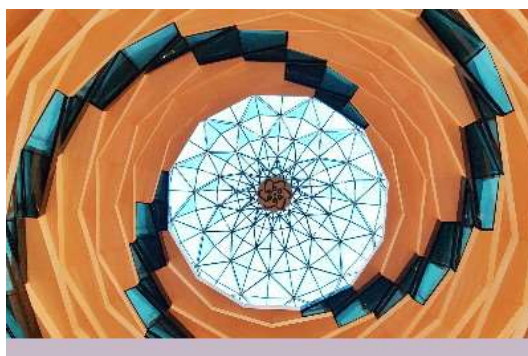
Premature Rupture of Membranes: Making the Diagnosis



An excellent review on PROM, including 2 new podcasts

#### THE GENOME

Incidental Detection of Maternal Malignancies via Prenatal Screening



An expert commentary on follow-up to a NIPS report that suggests risk for maternal malignancy

#### GYN

BV? Candidiasis? Trich? A Practical Approach to Making the Diagnosis

#### ALERTS

ALERT: Get Updates on USPSTF 2022 Pap Smear Changes



An expert review on how to diagnose vaginitis



### Cervical Cancer Screening Recommendations

The USPSTF will soon release new draft recommendations for cervical cancer screening

## PRIMARY CARE

## COVID-19 GRAND ROUNDS

Prediabetes and Diabetes Type 2: Screening and Making the Diagnosis

COVID-19 Testing: CDC Guidance on Virus and Antibody Testing



The latest guidelines on Diabetes Type 2 screening including prediabetes



Summary of the NIH guidance on COVID-19 testing

## ALERTS

## JOIN ObGFIRST TODAY

ACMG Guidance on the Use of NIPS in Low Risk Women

ObGFirst - Guideline Summaries & Research Summaries Daily



New NIPS guidance from ACMG



Mobile-friendly notifications about

---

Please Share »

Already a Subscriber? Thank You!

New to Us? Subscribe Today!

Free Subscription Here »

And, as always, let us know what topics you would like to see and how we can further improve [The ObG Project](#).



Copyright © 2022 The ObG Project, All rights reserved.

Want to change how you receive these emails?  
You can [update your preferences](#) or [unsubscribe from this list](#)

